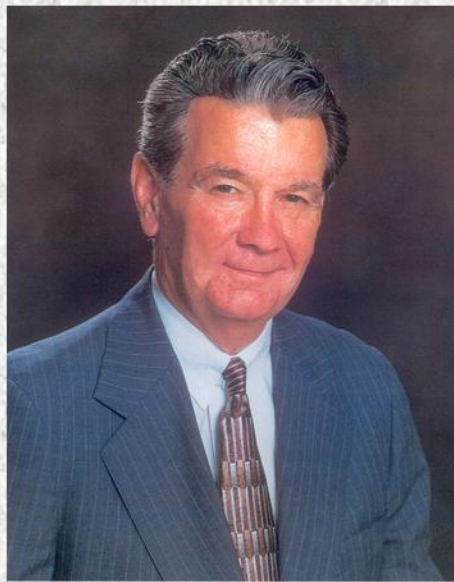


**ATLASES OF HAMPDEN COUNTY  
MASSACHUSETTS**



**GRANVILLE ~ 1831  
(A001)**



*Donald E. Ashe, Register  
Hampden County Registry of Deeds,  
a Division of the Office of  
William Francis Galvin, Secretary of the Commonwealth*

**WINE STN**

**RUSSELL**

**BLANDFORD**

**TOLLAND**



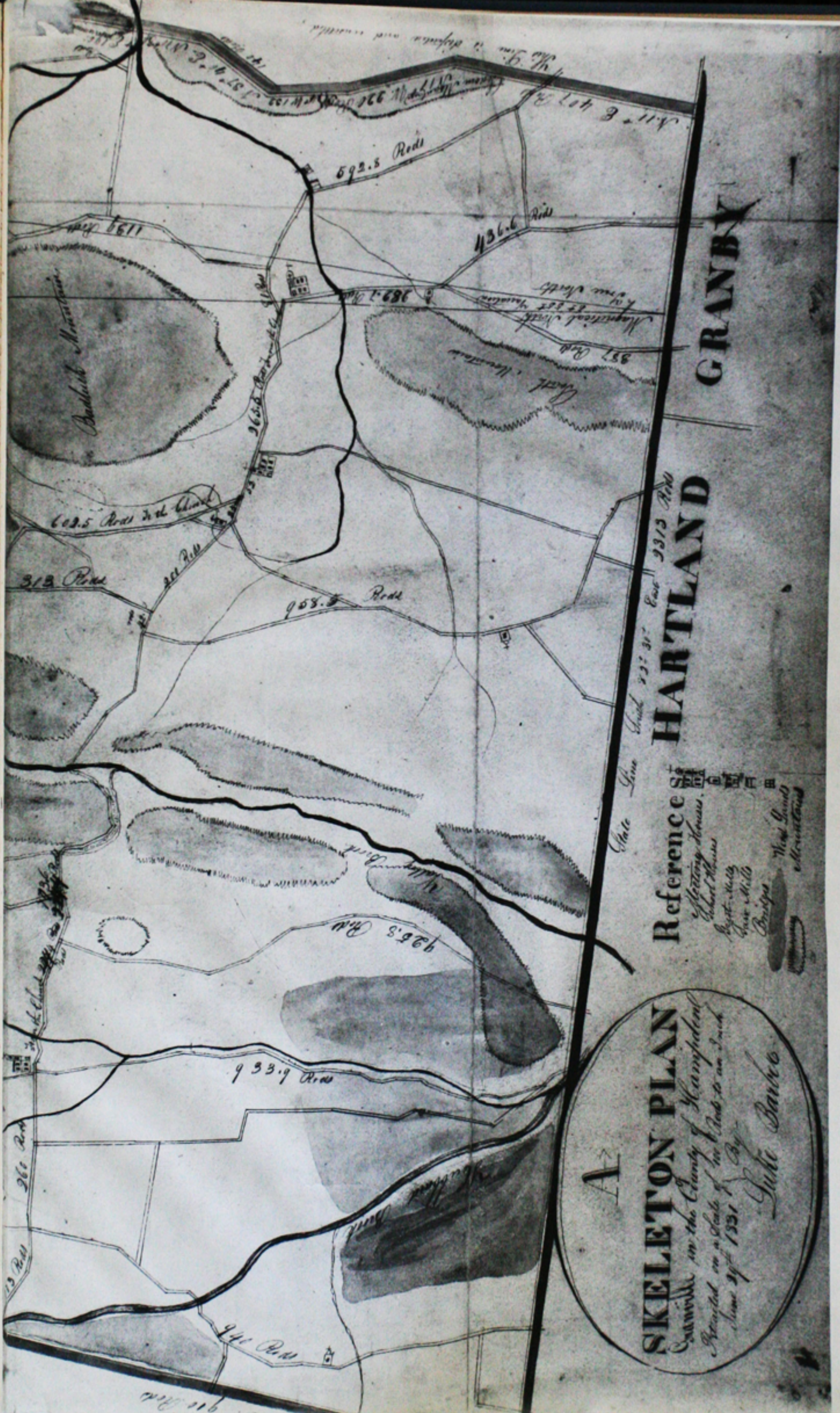
100 307 &

561.76  
56276 Roads

679.9 Acres

1239 Acres to Blandford

100 307 &



*W. G. ... 1757 ...*

State Line South 29° 30' East 9313 Rods

GRANBY

HARTLAND

Reference SI  
 Electing Houses  
 School Houses  
 Bapt. Mills  
 Grain Mills  
 Bridges  
 Wood Lands  
 Mountains

A2  
**SKELETON PLAN**  
 Examined in the County of Hampshire  
 Approved on a Scale of 100 Rods to an Inch  
 June 24th 1831  
 Luke Barber

592.5 Rods  
 436.6 Rods  
 1199 Rods  
 387 Rods  
 365.6 Rods  
 602.5 Rods  
 313 Rods  
 201 Rods  
 968.5 Rods  
 925.5 Rods  
 933.9 Rods  
 260 Rods  
 940 Rods  
 910 Rods

Badwick Mountain

Hartland Mountain

Hartland Brook

ANDIS-

*Minneapolis Sand*

BLAND

FIELD

*Magazine North  
55° 30' 30" North  
and South*

*Farmington*

*River*

COLEBROOK

HARTLAND







**End of Book A001 ~ Atlas ~ Granville 1831**